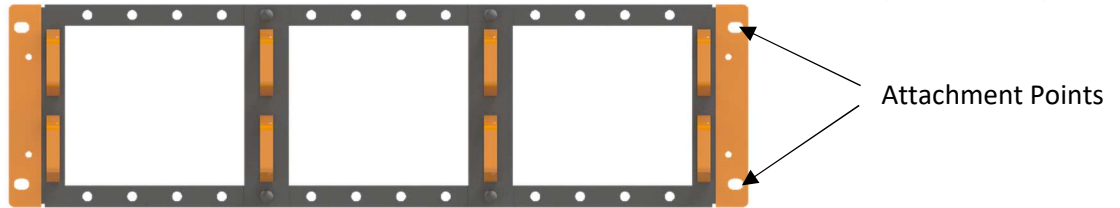


UMS-140: LGX Chassis Installation Guide

Part#: PLO-3RU-LMC-14LGX

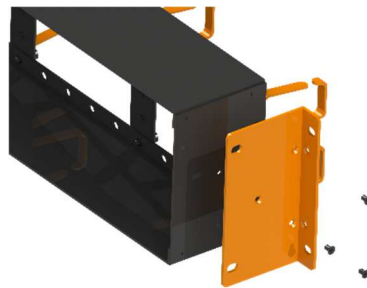
19-inch Rack Mounting

- Mounting brackets for a 19-inch rack deployment are installed prior to shipment.
- Installation Materials: Qty 4, Phillips Head 10-32 and Qty 4, 12-24 mounting screws.



19-inch to 23-inch Conversion

- Remove the Qty 3, Phillips Head screws currently securing the bracket on one side of the chassis.
- Rotate the bracket to the 23-inch position.
- Reattach the bracket with Qty 2 of the screws at the front hole locations. Reinstall the non-used screw for future 19-inch deployments.
- Complete the same process for the other side of the chassis



23-inch Rack Mounting



Installation

- Lift chassis into position in the rack and hold it securely.
- Insert a mounting screw at the top attachment point on each bracket, partially fasten the screws, and then insert and partially fasten a mounting screw at the bottom attachment point on each bracket.
- Fully fasten each mounting screw until the chassis is securely installed in the rack. Do not overtighten the screws. Install is now complete.