

P/N: PLO-1RU-LMC-3LGX
UNIVERSAL LGX MOUNTING CHASSIS, 3 SLOT, 1RU



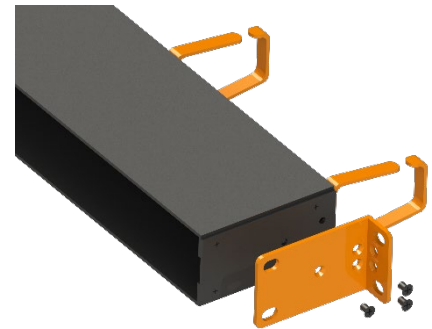
19-INCH RACK MOUNTING

- Mounting brackets for a 19-Inch rack deployment are installed prior to shipment.
- Installation Materials: Qty-4, Phillips Head 10-32, and Qty-4, 12-24 mounting screws.



19-INCH TO 23-INCH CONVERSION

- Remove the Qty-3, Phillips Head screws currently securing the bracket on one side of the chassis.
- Rotate the bracket to the 23-Inch position.
- Reattach the bracket with Qty-2 of the screws at the front hole locations. Reinstall the non-used screw for future 19-Inch deployments.
- Complete the same process for the other side of the chassis.



23-INCH RACK MOUNTING



INSTALLATION

- Lift chassis into position in the rack and hold it securely.
- Insert a mounting screw at the top attachment point on each bracket, partially fasten the screws, and then insert and partially fasten a mounting screw at the bottom attachment point on each bracket.
- Fully fasten each mounting screw until the chassis is securely installed in the rack. Do not overtighten the screws. Installation is now complete.

SPECIFICATIONS

TECHNICAL SPECIFICATIONS		
DESCRIPTION	UNITS	SPECIFICATION
CHASSIS	--	UMS-30
TOTAL RACK UNITS (1.75"/ RU)	RU	1
HEIGHT	in	1.75
DEPTH INCLUDING FIBER MGT.	in	5.69
REVERSIBLE MOUNTING BRACKETS		Yes
WIDTH	in	19 or 23
LGX SLOTS	#	3
NYLATCH SPACING (LGX SLOTS)	mm	118
OPERATING TEMPERATURE	°C	-40 ~ +85
STORAGE TEMPERATURE	°C	-40 ~ +85

INSTALLATION SUPPORT

If you encounter issues, please contact us via phone or email. Alternately, you can use the camera on your smartphone to scan the QR code below to review the latest product specs and applications or submit a contact ticket for support.

Plugin Optics Customer Technical Support
 Tel: +1 (561) 612-5703
 Email: cx@pluginoptics.com



Install Support