

PLO-U-PED-1014

10-INCH UNIVERSAL DISTRIBUTION PEDESTAL, BASE & TOP

10-INCH UNIVERSAL DISTRIBUTION PEDESTAL

The 10-Inch Universal Pedestal (PLO-U-PED-1014) consists of the base and the top. Both the base and top are stackable conserving significant space when being shipped, warehoused, and transported to the jobsite. This nonmetallic enclosure provides protective housing for above grade Outside Plant (OSP) fiber splices. When buried feeder fiber is stubbed for loop-through, stub-in, and customer drops splicing, the 10-Inch Universal Distribution Pedestal provides protection against weather, dirt, flooding and insects.

The base provides protection and management of the feeder fiber cables, conduit and branch/drop cables as they enter and exit the pedestal. The base features dedicated areas for feeder cables, knockouts for drops and an extra wide, 14-Inch opening towards its top. The base also features stake mounting locations, front and rear, to fit multiple orientations. The top provides a rigid protective structure that slides over the above ground splice environment. The top also features a self-locking latch for ease of installation and security and a domed top for shedding rain, snow, and ice.



10-Inch Distribution Pedestal

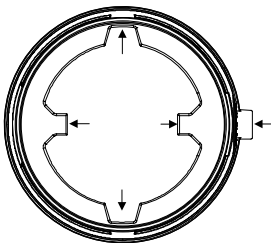


Figure 1: Pedestal Base, Top-Down View

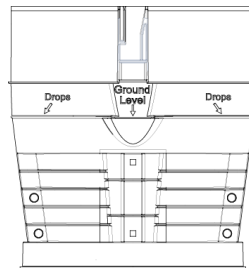


Figure 2: Pedestal Base, Front View

TECHNICAL SPECIFICATIONS		
DESCRIPTION	UNITS	SPECIFICATION
TOTAL HEIGHT	in (mm)	36.25 (920.75)
BASE HEIGHT	in (mm)	14.25 (361.95)
TOP HEIGHT	in (mm)	25.75 (654.05)
TOTAL HEIGHT (INSTALLED)	in (mm)	28 (711.2)
WIDTH (MAX. DIA.)	in (mm)	13.9 (353.06)
WITDTH (MIN. BASE)	in (mm)	11.25 (285.75)
OPERATING TEMPERATURE	°C	-40 ~ +85
STORAGE TEMPERATURE	°C	-40 ~ +85



INSTALLATION

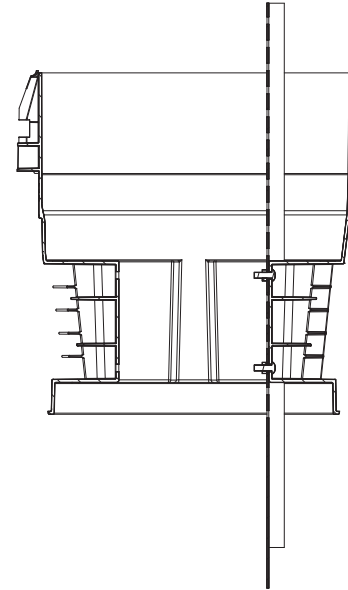
The following instructions are meant to act as guidelines only. Where applicable it is recommended that all company and local methods, procedures, and rules are followed.

PREPARE THE SITE

Prepare the trench/hole where the pedestal will be installed. The base will require a 16-inch diameter hole to allow for a minimum of 1 to 2 inches of backfill around the perimeter of the pedestal. The pedestal base will be buried approx. 8.5 inches below grade with the pedestal mounting stake another 7 inches below that.

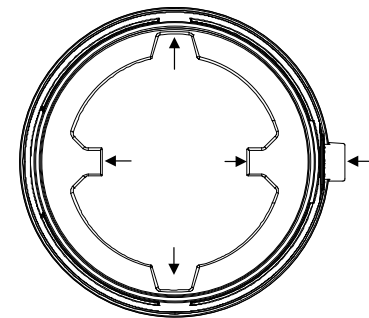
ATTACH THE STAKE TO THE PED

Using the hardware provided with the stake install the stake to the pedestal. You will notice that there are two possible stake mounting locations. One directly behind the latch for the lock on the front of the pedestal and one directly across from it on the rear of the pedestal base. This allows the orientation of the lock, stake, and mounting plate to be adjusted for challenging installation locations. The figure above shows the stake mounted to the base, using the rear mounting location opposite the lock latch. Insert the mounting hardware into the desired pedestal mounting location and align the stake so that it protrudes between 7 and 10 inches below the pedestal base.



PLACE AND BACKFILL

Place the pedestal and stake in the hole and backfill ensuring that the feeder cables/conduit are oriented towards the sides of the peds. In the figure below you can see that, when facing the pedestal front, the feeder channels and drop cable knockouts are labeled and located on the left and right sides of the pedestal base.



COMPLETE INSTALLATION

Now that the pedestal base and stake are backfilled add the mounting panel, splice trays and any other components required to complete the project. Once complete slide the pedestal top over the installed equipment and down onto the base. When the top is in the correct position you should hear an audible click of the spring-loaded lock. Test that the pedestal is properly secured by pulling up gently on the pedestal top. If the top releases the lock was not fully engaged. Simply lower the top down onto the base with enough force until you hear the lock "click."

ORDERING INFORMATION

The table below contains the ordering information for ordering complimentary pedestal hardware offered by Plugin Optics. If you have any questions, feel free to call the support number listed above or email us at cx@pluginoptics.com for more information.

KIT ORDERING INFORMATION	
PART NUMBER	DESCRIPTION
PLO-U-PED-1014	10-INCH UNIVERSAL DISTRIBUTION PEDESTAL, BASE & TOP
COMPLIMENTARY PRODUCTS	
PLO-US-42	UNIVERSAL PEDESTAL STAKE, TWO PIECE, ADJUSTABLE LENGTH, 22 to 42-INCH
PLO-UMP-1552	UNIVERSAL MOUNTING PLATE, PEDESTAL AND CPE
PLO-UTRAY-854	UNIVERSAL FIBER SPLICE TRAY KIT
PLO-UGB-300-L	UNIVERSAL GROUNDING BRACKET, PEDESTAL AND CPE



SAFETY NOTICES

It is important to follow company and local safety guidelines when handling fiber optic cables. Never look into the end of a fiber jumper or cable in the presence of laser light. Exercise extreme caution when installing, testing, or maintaining live circuits. If eyes are exposed to laser light or radiation occurs, immediately seek treatment by a medical professional as exposure is a substantial risk of serious damage to the eye and can result in total vision loss!

Fiber cables and fiber cleaning solvents may contain hazardous or harmful materials. Refer to the Material Safety Data Sheet (MSDS) when working with cleaning solvents or similar products. Also, Fiber optic glass fragments can be very sharp and can be harmful to skin and eyes so be sure to exercise extreme discipline when handling fibers, cables, and solvents. Use Company standard procedures to collect and dispose of glass shards and fragments.

When working around the job site, it is important to use all the safety equipment recommended by your company. Items like laser safe protective eyewear, work gloves, steel toe boots and tools in good working order can be the difference between finishing the job in good health, without injury, and with your eyesight.

INSTALLATION SUPPORT

If you run into any issue or have any questions about this or any PlugIn Optics solution, please feel free reach out to us via phone or email and contact us any time or you can simply use the camera on your smartphone to scan the QR code below to get all the latest product specs, review applications or even submit a contact ticket for support.

PlugIn Optics Customer Support

Contact us by phone @ (561) 612-5703
Or via email: cx@pluginoptics.com



Install Support

