

UNIVERSAL BUILDING ENCLOSURES

OVERVIEW

Universal Building Enclosures (UBE's) are LGX based and available in a single compartment, for use with connectorized common or feeder cables, and a dual compartment for "splice in" applications and additional slack storage. The front compartment is used to house LGX WDM modules, LGX PLC Splitters and 12 and 24-fiber bulkhead connectors. The rear compartment provides fiber slack storage and a 24-fiber splice tray for mass or single fiber splicing.



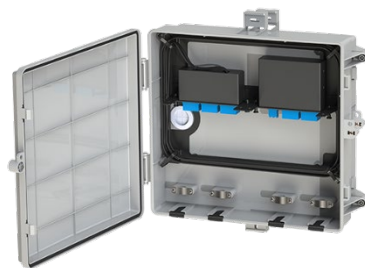
PLO-UBE-4LGX-0000-01 Single Compartment Enclosure



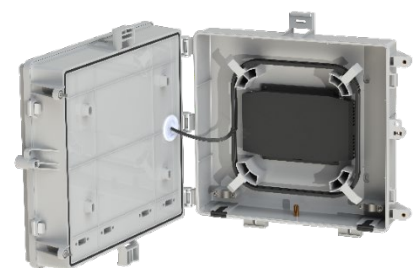
PLO-UBE-4LGX-SPAS-02 Dual Compartment Enclosure



Enclosure shown without LGX or UBM solutions installed.



Front compartment shown with a 24 Port LC-UPC Pigtail Module on left and CWDM or DWDM module installed on the right.



Rear compartment shown with included splice tray and fiber slack.

FEATURES (FRONT)

- 4 LGX Slots
- CWDM-DWDM LGX Modules
- PLC Splitter LGX Modules
- LGX Pigtail Modules
- SC and LC Bulkhead Panels
- SC and LC Bulkhead Panels

FEATURES (REAR)

- Up to 15 Meters of Slack Storage
- 24-Fiber Splice Tray
- Mass Fusion or Single Splice
- Up to 15 Meters of Slack Storage

APPLICATIONS

- Fiber to MDU
- Dedicated Wave Services
- Broadband Services
- Indoor, Outdoor

TECHNICAL SPECIFICATIONS

DESCRIPTION	UNITS	PLO-UBE-4LGX-SPAS-02	PLO-UBE-4LGX-0000-01
HEIGHT	in (mm)	13.8 (350.52)	13.8 (350.52)
WIDTH	in (mm)	13.6 (345.44)	13.6 (345.44)
DEPTH	in (mm)	5.5 (139.7)	3.4 (86.36)
MATERIAL	--	ABS+PC (UL94 V0)	
IP RATING	--	IP65	
COLOR	--	GRAY	
OPERATING TEMPERATURE	°C	-40 ~ +85	
STORAGE TEMPERATURE	°C	-40 ~ +85	

ENCLOSURE ORDERING INFORMATION

PART NUMBER	DESCRIPTION
PLO-UBE-4LGX-SPAS-02	UNIVERSAL BUILDING ENCLOSURE (UBE), DUAL COMPARTMENT, 4 LGX SLOT, SPLICE TRAY
PLO-UBE-4LGX-0000-01	UNIVERSAL BUILDING ENCLOSURE (UBE), SINGLE COMPARTMENT, 4 LGX SLOT

NOTE: PLUGIN OPTICS ALSO CARRIES A FULL LINE OF FIBER JUMPERS AND CABLES.

OPTIONAL ACCESSORIES ORDERING INFORMATION

PART NUMBER	DESCRIPTION
PLO-ULGX-UBM-01	UNIVERSAL LGX BRACKET, 1 UBM MODULE IN LGX SLOT
LGX BULKHEAD CONNECTORS	
PLO-12LGX-BLKFP-LCU	12 PORT LGX BULKHEAD FACEPLATE, 1-WIDE, LC UPC
PLO-24LGX-BLKFP-LCU	24 PORT LGX BULKHEAD FACEPLATE, 1-WIDE, LC UPC
PLO-12LGX-BLKFP-SCU	12 PORT LGX BULKHEAD FACEPLATE, 1-WIDE, SC UPC
PLO-12LGX-BLKFP-SCA	12 PORT LGX BULKHEAD FACEPLATE, 1-WIDE, SC APC
PLO-24LGX-BLKFP-SCA	24 PORT LGX BULKHEAD FACEPLATE, 2-WIDE, SC APC
LGX BULKHEAD CONNECTORS	
PLO-12LGX-12FLSZH-2MLC	12 PORT LGX CASSETTE, 1-WIDE, LC UPC, WITH 2 METER 12-FIBER FLAT RIBBON CABLE PIGTAIL, G657A1-LSZH, YELLOW
PLO-24LGX-24FLSZH-2MLC	24 PORT LGX CASSETTE, 1-WIDE, LC UPC, WITH TWO 2 METER 12-FIBER FLAT RIBBON CABLE PIGTAIL, G657A1-LSZH, YELLOW
PLO-12LGX-12FLSZH-2MSC	12 PORT LGX CASSETTE, 1-WIDE, SC UPC, WITH 2 METER 12-FIBER FLAT RIBBON CABLE PIGTAIL, G657A1-LSZH, YELLOW
PLO-12LGX-12FLSZH-2MSCA	12 PORT LGX CASSETTE, 1-WIDE, SC APC, WITH 2 METER 12-FIBER FLAT RIBBON CABLE PIGTAIL, G657A1-LSZH, YELLOW
PLO-24LGX-24FLSZH-2MSCA	24 PORT LGX CASSETTE, 2-WIDE, SC APC WITH TWO 2 METER 12-FIBER FLAT RIBBON CABLE PIGTAIL, G657A1-LSZH, YELLOW

NOTE: PLUGIN OPTICS ALSO CARRIES A FULL LINE OF SPLITTERS, CWDM & DWDM MODULES, AND FIBER CABLES/JUMPERS TO COMPLEMENT YOUR UBE APPLICATION.